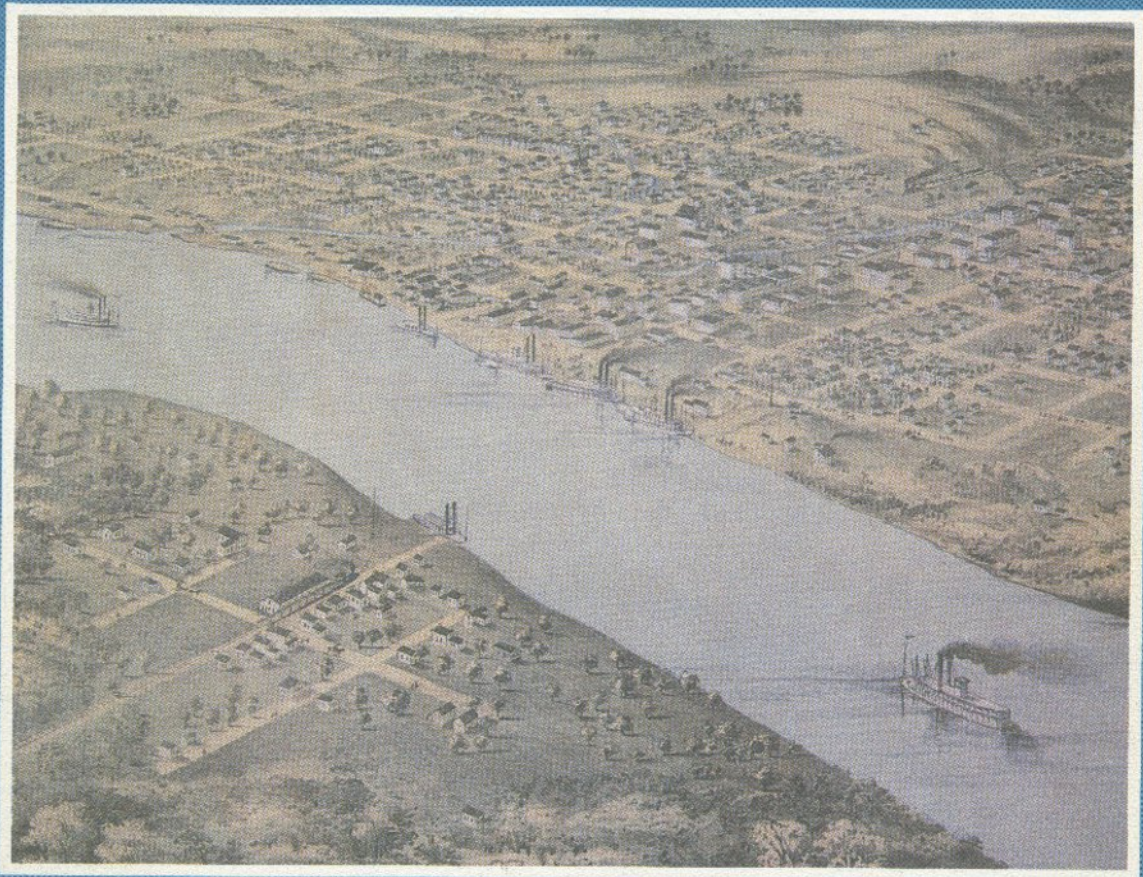


KANSAS HISTORY

A JOURNAL OF THE CENTRAL PLAINS



Volume 2
Number Three
Autumn 1978

THE KANSAS STATE HISTORICAL SOCIETY

JOSEPH W. SNELL, *Executive Director*

OFFICERS

SR. M. EVANGELINE THOMAS, Salina, *President*
WILLIAM E. UNRAU, Wichita, *First Vice-President*
DONALD R. MCCOY, Lawrence, *Second Vice-President*
JOSEPH W. SNELL, Topeka, *Secretary*
ROBERT W. RICHMOND, Topeka, *Treasurer*

EXECUTIVE COMMITTEE

CLIFFORD R. HOPE, JR., Garden City
WILFORD RIEGLE, Emporia
JANE R. ROBISON, Dodge City
WILLIAM H. SEILER, Emporia
HELEN L. SMITH, Colby
HOMER E. SOCOLOFSKY, Manhattan
FLOYD R. SOUDERS, Cheney
ARTHUR J. STANLEY, JR., Leavenworth
CALVIN STROWIC, Abilene

Ex officio members

SR. M. EVANGELINE THOMAS, Salina
WILLIAM E. UNRAU, Wichita
DONALD R. MCCOY, Lawrence

The Kansas State Historical Society solicits diaries, letters, and other original records, books and pamphlets written by Kansans or about Kansas, territorial and state newspapers up to 1876, photographs, and maps and atlases of the state. The Society will also be glad to consider objects suitable for the museum, especially those having a direct connection with Kansas history.

Gifts and bequests for the furtherance of the Society's work will be gratefully received. Such remembrances, in various forms, are appropriate permanent memorials to the interests of an individual or a group. A representative of the Society will be glad to consult with anyone wishing to make a gift or to establish a bequest or endowment. Address the Executive Director, KANSAS STATE HISTORICAL SOCIETY, 120 W. Tenth St., Topeka, Kan. 66612.

THE COVER

A bird's-eye view of a portion of Atchison in 1869. The sketch was drawn by A. Ruger and produced by the Merchants Lithographing Co., Chicago. Among the early settlers of Atchison were many Germans—see Eleanor Turk's article on the Germans of Atchison beginning on page 146. The village on the near side of the river is Winthrop, Mo.

KANSAS HISTORY

A JOURNAL OF THE CENTRAL PLAINS

Volume 2

Autumn, 1979

Number 3

Published by

Forrest R. Blackburn,
Managing Editor

THE KANSAS STATE
HISTORICAL SOCIETY

Dot E. Taylor,
Assistant Editor

CONTENTS

	PAGE
THE GERMANS OF ATCHISON, 1854-1859: Development of an Ethnic Community	<i>Eleanor L. Turk</i> 146
THE POTTAWATOMIES AND ALCOHOL: An Illustration of the Illegal Trade	<i>Jeanne P. Leader</i> 157
FIFTY YEARS ON A ONE-FAMILY FARM IN CENTRAL KANSAS	<i>Erich Fruehauf</i> 166
THE KANSAS CONGRESSIONAL DELEGATION AND THE SELECTIVE SERVICE ACT OF 1940	<i>Philip A. Grant, Jr.</i> 196
BYPATHS OF KANSAS HISTORY	206
KANSAS HISTORY OFF THE PRESS	207

Kansas History, A Journal of the Central Plains is published quarterly at 120 W. 10th St., Topeka, Kan. It is distributed without charge to members of the Kansas State Historical Society; single issues, when available, may be purchased for \$2.50 each. Membership dues are: annual \$10, sustaining \$20, patron \$100, life \$100. Membership applications and dues should be sent to Robert W. Richmond, treasurer.

Correspondence concerning articles for *Kansas History* should be addressed to the managing editor. The Society assumes no responsibility for statements made by contributors.

Second-class postage has been paid at Topeka, Kan.

ISSN-0149-9114