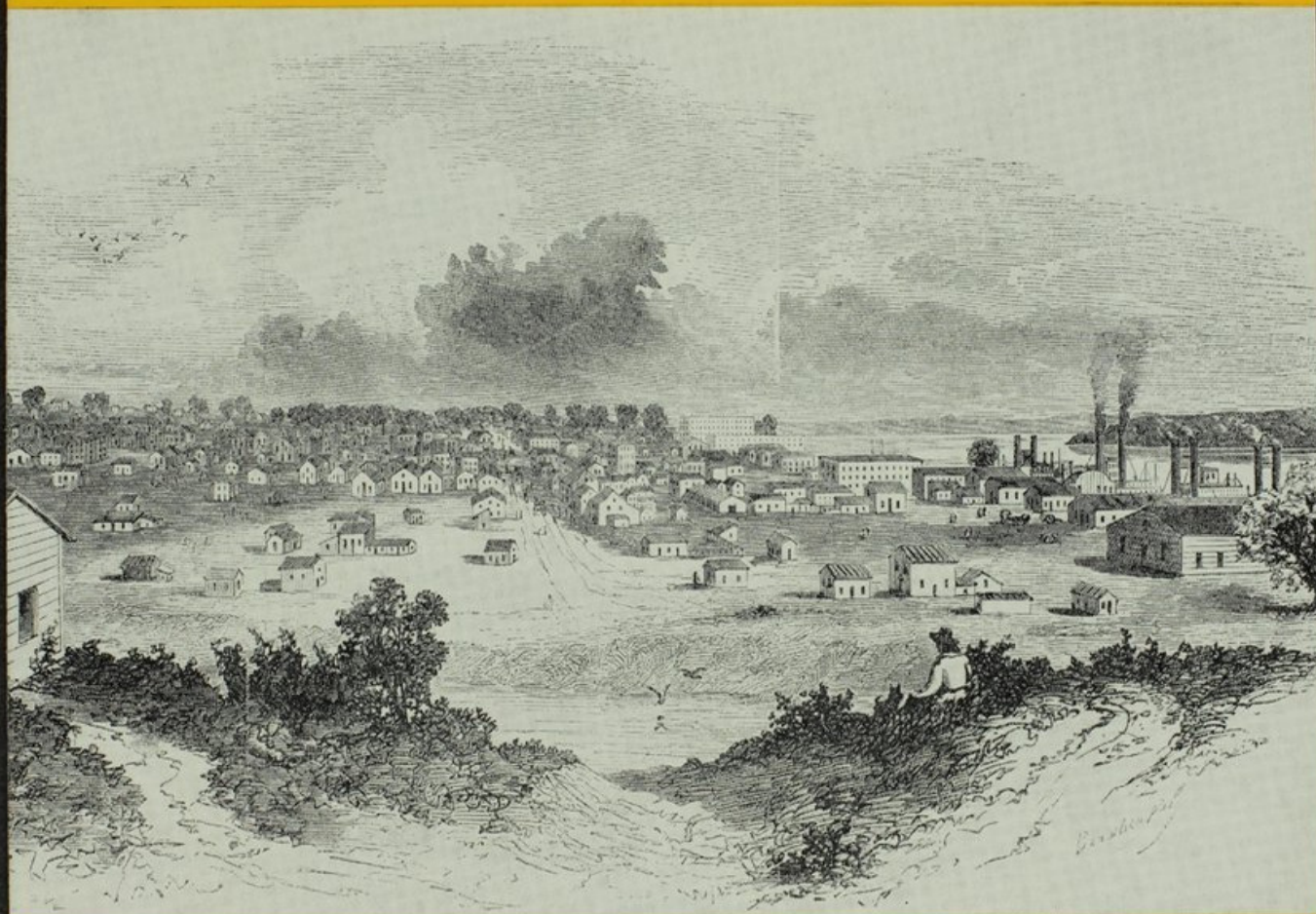


THE
KANSAS HISTORICAL
QUARTERLY

November • 1948



Published by
Kansas State Historical Society
Topeka

KIRKE MECHEM
Editor

JAMES C. MALIN
Associate Editor

NYLE H. MILLER
Managing Editor

CONTENTS

	PAGE
OVER THE SANTA FE TRAIL THROUGH KANSAS IN 1858 (Translated by <i>John A. Burzle</i> ; Edited and Annotated by <i>Robert Taft</i>), <i>H. B. Möllhausen</i> , 337	337
A HISTORY OF THE TOPEKA DENTAL COLLEGE..... <i>Ralph W. Edwards</i> , 381	381
WILLIAM CLARK'S DIARY, MAY, 1826-FEBRUARY, 1831: Part Four, 1830-1831—Concluded.....Edited by <i>Louise Barry</i> , 384 With the Following Illustrations: Explosion of the <i>Helen McGregor</i> in 1830, facing p. 384, and View of St. Louis, Probably in the Early 1840's, facing p. 385.	384
BYPATHS OF KANSAS HISTORY.....	411
KANSAS HISTORY AS PUBLISHED IN THE PRESS.....	413
KANSAS HISTORICAL NOTES	420
ERRATUM IN VOLUME XVI	424
INDEX TO VOLUME XVI	425

The Kansas Historical Quarterly is published in February, May, August and November by the Kansas State Historical Society, Topeka, Kan., and is distributed free to members. Correspondence concerning contributions may be sent to the editor. The Society assumes no responsibility for statements made by contributors.

Entered as second-class matter October 22, 1931, at the post office at Topeka, Kan., under the act of August 24, 1912.

THE COVER

Leavenworth in 1858, the year it was visited by H. B. Möllhausen's exploring party (*see pp. 378-380*) on returning from the region of the lower Colorado river. The drawing was published in *Frank Leslie's Illustrated Newspaper*, New York, December 25, 1858. It was sketched by the magazine's own correspondent "from the residence of Amos Reese, Esq., situated upon an elevation near the river, in South Leavenworth, and directly facing toward the north."